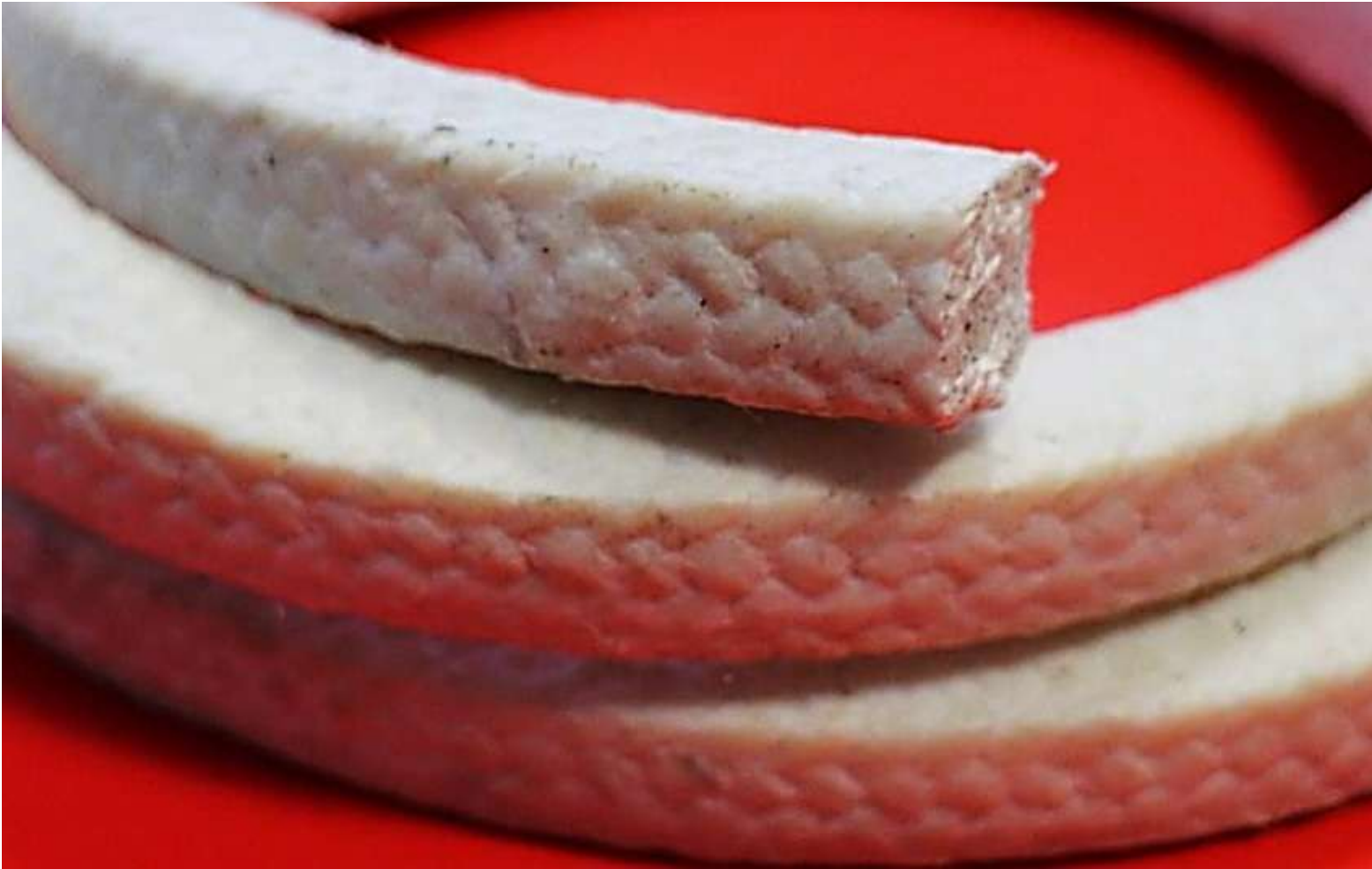


**GENERAL<sup>®</sup>  
PACKING**



# **EUROSEAL<sup>®</sup> 2016**

Reliable Stuffing Box Seal



### PERFORMANCE SUPERIORI

EUROSEAL® 2016 è una baderna realizzata con filato sintetico impregnato di PTFE.

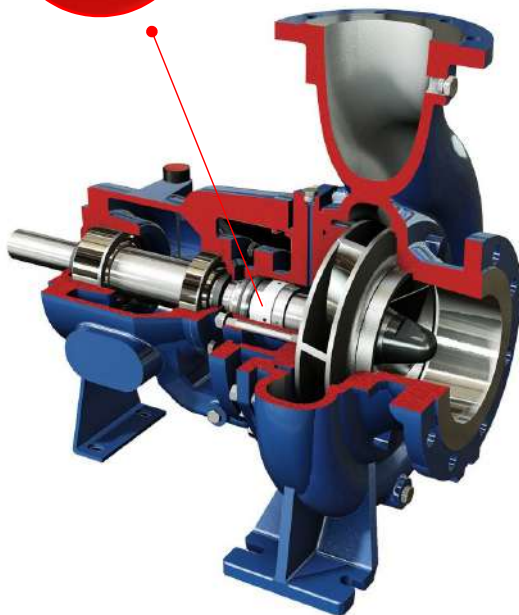
La speciale lubrificazione con PTFE in dispersione, sia sul filato che nell'intreccio, conferisce a questa baderna eccellente versatilità d'impiego su mixer ed agitatori.

Basso coefficiente d'attrito e la possibilità di dissipare il calore generato dalla velocità periferica rendono EUROSEAL® 2016 particolarmente idonea in applicazioni su pompe centrifughe e in presenza di prodotti chimici.

L'ottima resistenza meccanica del filato offre la possibilità di utilizzo con composti abrasivi. Sono notevoli anche la resistenza all'estrusione e la bassa usura dell'albero.

EUROSEAL® 2016 è autolubrificante, morbida, non indurisce e facile da installare.

E' disponibile anche una versione EUROSEAL 2016-G, impregnata con disolfito di molibdeno.



### SUPERIOR PERFORMANCE

EUROSEAL® 2016 is a packing made with PTFE saturated synthetic yarn.

The special lubrication with dispersed PTFE, on both yarn and braid, gives this packing excellent flexibility on mixers.

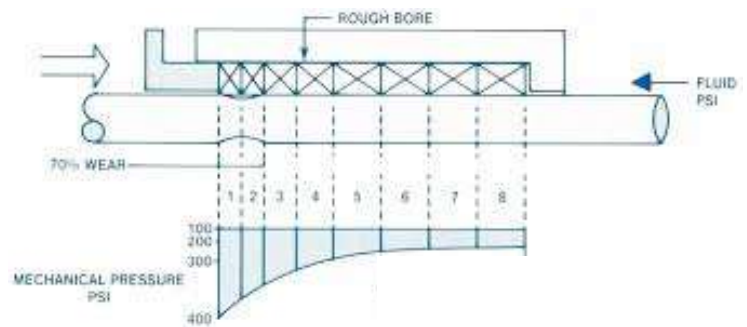
A low friction coefficient and the capability to disperse shaft speed generated heat make EUROSEAL® 2016 especially suitable on centrifugal pumps applications as well as in presence of chemical media.

Its yarn high mechanical resistance allows it to be used with abrasive compounds.

Extrusion resistance and low shaft wear are also a plus.

EUROSEAL® 2016 is self-lubrificant, soft, it does not harden and it is easy to install.

It's available also EUROSEAL 2016-G which is impregnated with molybdenum disulfite.



#### PROPRIETA' TECNICHE TECHNICAL PROPERTIES

T <sub>Min</sub>	-80° C
T <sub>max</sub>	260° C
P <sub>Max</sub>	20 bar
pH	3 - 12
Speed	14 m/s

#### CONFEZIONI STANDARD STANDARD PACKAGING

1/8" - 9/16" (3 mm - 14 mm)	2 - 2,2 Kg
5/8" - 1" (16 mm - 25 mm)	4 - 4,4 Kg

Sezioni superiori a 25 mm disponibili su richiesta  
Sections over 25 mm available on request

Since all properties, specifications and application parameters shown throughout this catalogue are approximate and may be mutually influenced, your specific application should not be undertaken without independent study and evaluation for suitability. All technical data and advice given is based on experiences GENERAL PACKING ITALY® has made so far. Failure to select proper sealing products can result in damage and/or personal injury. Properties, specifications and application parameters are subject to change without notice. GENERAL PACKING ITALY® does not undertake any liability of any kind whatsoever. Please note: the color of the actual product might vary from the above image on this data-sheet.